



# GAT MONTHLY MEMBERSHIP PROGRESS REPORT

Results as of: 12/31/2021

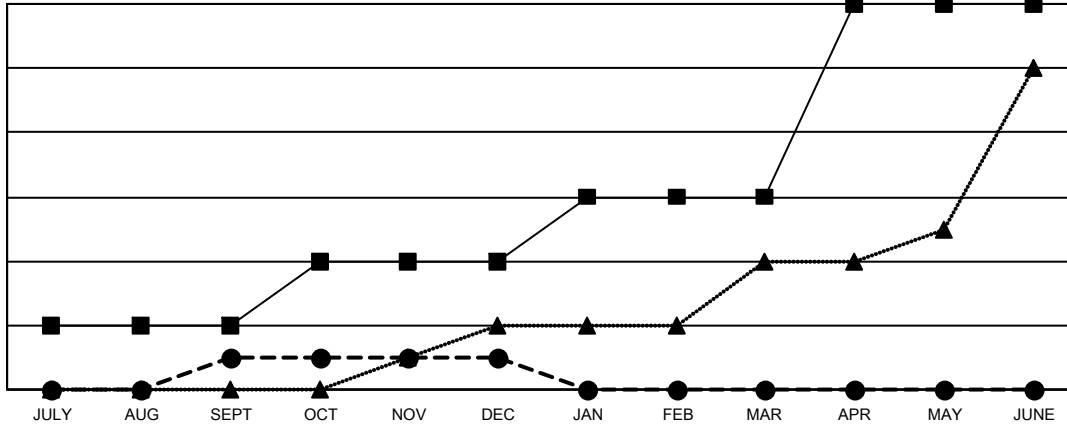
Multiple District 27

LOCATION: WISCONSIN

| Clubs                 |               |           |               |
|-----------------------|---------------|-----------|---------------|
| RESULTS FOR 2021-2022 |               |           |               |
| QUARTER               | NEW CLUB GOAL | NEW CLUBS | DROPPED CLUBS |
| JULY/AUG/SEPT         | 2             | 1         | 0             |
| OCT/NOV/DEC           | 2             | 0         | 6             |
| JAN/FEB/MAR           | 2             | 0         | 0             |
| APR/MAY/JUNE          | 6             | 0         | 0             |

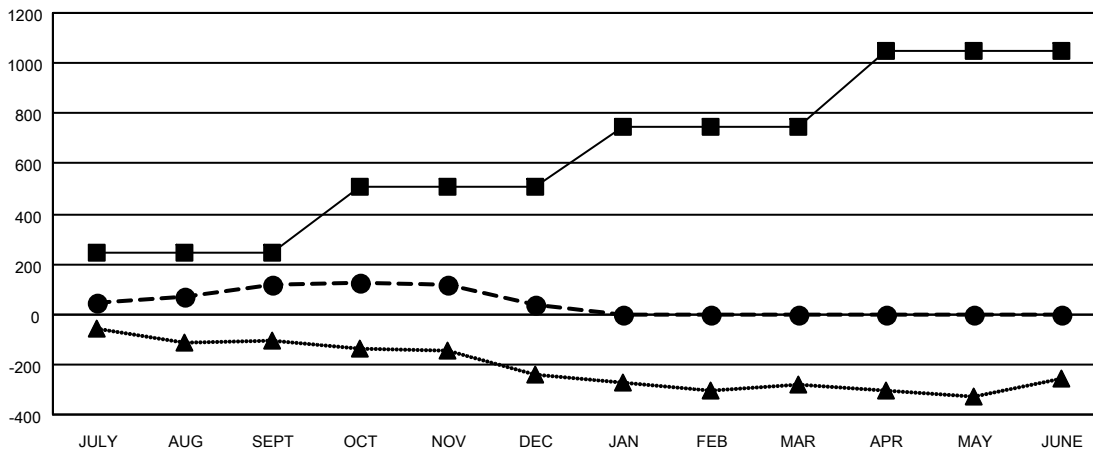
| Members               |                        |                      |  |
|-----------------------|------------------------|----------------------|--|
| RESULTS FOR 2021-2022 |                        |                      |  |
| QUARTER               | MEMBER GROWTH NET GOAL | MEMBER GROWTH ACTUAL | DROPPED MEMBERS ACTUAL (including transfers) |
| JULY/AUG/SEPT         | 243                    | 461                  | 312  |
| OCT/NOV/DEC           | 265                    | 362                  | 395  |
| JAN/FEB/MAR           | 241                    | 0                    | 0  |
| APR/MAY/JUNE          | 301                    | 0                    | 0  |

GOALS AND ACTUAL NEW CLUBS CUMULATIVE



- CURRENT YEAR GOALS FOR NEW CLUBS
- CURRENT YEAR ACTUAL NEW CLUBS
- ▲- LAST YEAR ACTUAL NEW CLUBS

GOALS AND ACTUAL MEMBERS CUMULATIVE



- MEMBER GROWTH NET GOAL
- MEMBER GROWTH ACTUAL
- ▲- LAST YEAR MEMBERSHIP ACTUAL

|                        |            |
|------------------------|------------|
| DROPPED CLUBS: 6       |            |
| <b>DROPPED MEMBERS</b> |            |
| DECEASED               | 94         |
| CLUB CANCELLED         | 51         |
| OTHER                  | 562        |
| <b>TOTAL</b>           | <b>707</b> |

249 CLUBS OF 515 ADDED 1 OR MORE NEW MEMBERS

[CLICK HERE FOR CUMULATIVE MEMBERSHIP DATA](#)

| GENDER DISTRIBUTION                    |                 |
|--|-----------------|
| MALE                                   | 12,144 (72.26%) |
| FEMALE                                 | 4,661 (27.74%)  |
| NON BINARY                             | 0 (0.00%)       |
| PREFER NOT TO ANSWER                   | 0 (0.00%)       |
| <b>TOTAL FAMILY UNIT MEMBERS</b>       | <b>3,433</b>    |
| <b>FAMILY MEMBERS PAYING HALF DUES</b> | <b>1,745</b>    |